

# Waste Transfer Station Works

Chris Braines- Head of Environmental Services

12/05/2025

# Thank you



[www.teignbridge.gov.uk](http://www.teignbridge.gov.uk)



# Waste Transfer Station Works

Background

Simpler Recycling

Waste Permit

Site Infrastructure Requirements

Timeframe and Procurement

Questions





# Background

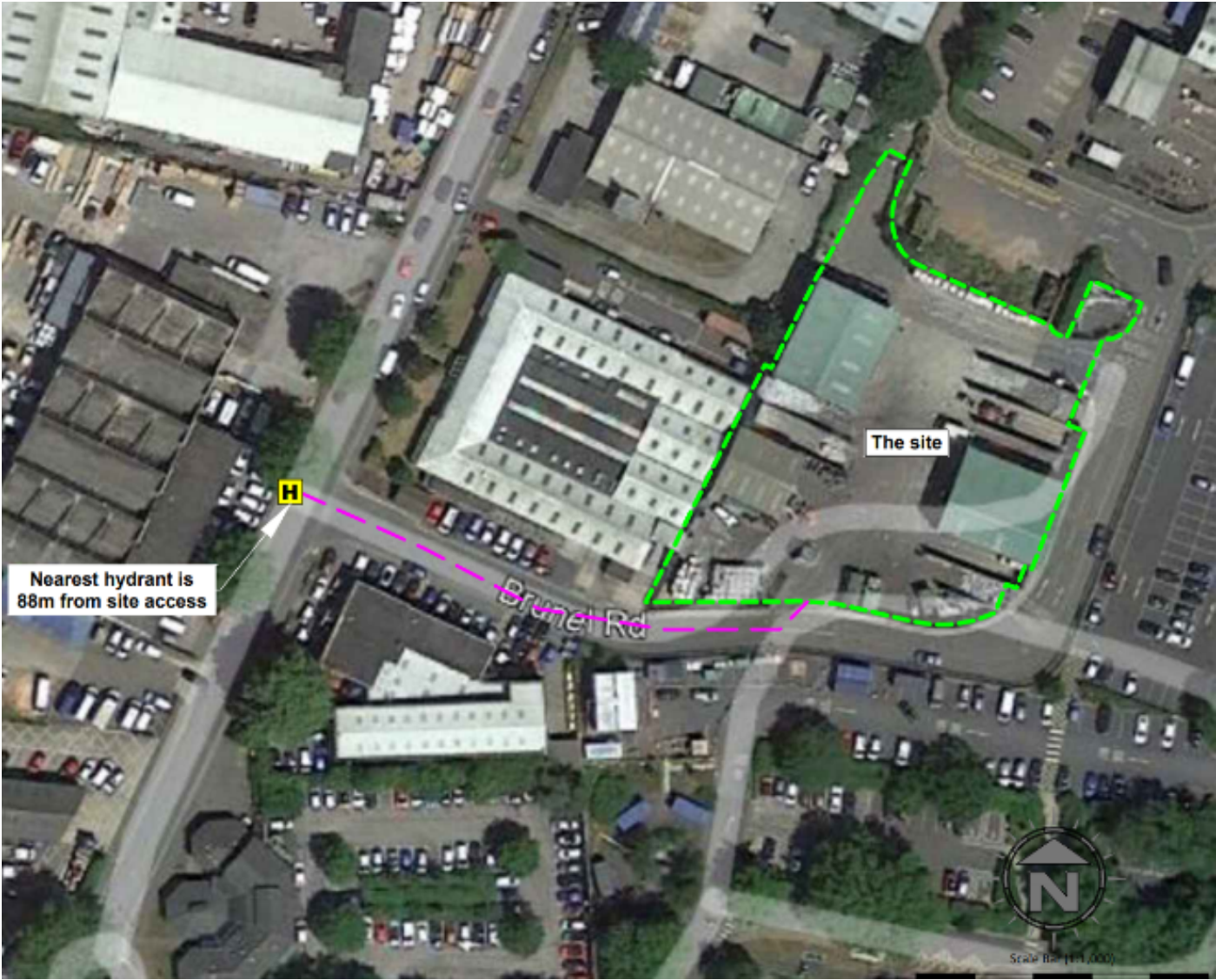


[www.teignbridge.gov.uk](http://www.teignbridge.gov.uk)





# Background



# Background



# Background

- The site manages the household recycling and food waste collected from across the district.
- Materials are delivered, sorted, stored, baled and bulked for onward transportation to reprocessors.
- Around 16,000 tonnes of recyclates handled annually.
- The site generates around £1.5M of income annually to support service costs.



# Background



# Background

- The 2018 [Resources and Waste Strategy](#) for England, outlined several policies for major reforms to the waste sector.
- [Led to the Environment Act 2021](#) and subsequently
- [The Separation of Waste \(England\) Regulations 2025](#)
- [The Environmental Permitting \(England and Wales\) \(Amendment\) Regulations 2023](#) also came into force.

# Simpler Recycling

Simpler Recycling aims to standardise the materials that are collected for recycling across all households and businesses in England.

Our service is well placed to comply with the requirements with two notable exceptions.

- The compulsory collection of cartons from all households by April 2026.
- The compulsory collection of flexible plastics and films from all households by April 2027.

Introducing these materials won't require changes to our collection vehicles but will require changes at the Waste Transfer Station.



# Simpler Recycling

## Cartons



## Flexible plastics and films





# Simpler Recycling

## Cartons



# Simpler Recycling

- Requirement to increase the throughput and storage capacity of the site to accommodate the recycling generated from new properties in the district.
- Since previous site improvement works in 2014 an additional 4,000 tonnes are handled annually.
- A further 1,600 tonnes are estimated to require processing over the next decade based on housing growth.
- Household collection containers will also need to be reviewed. This is being considered separately to the WTS infrastructure works project.



# Waste Permit

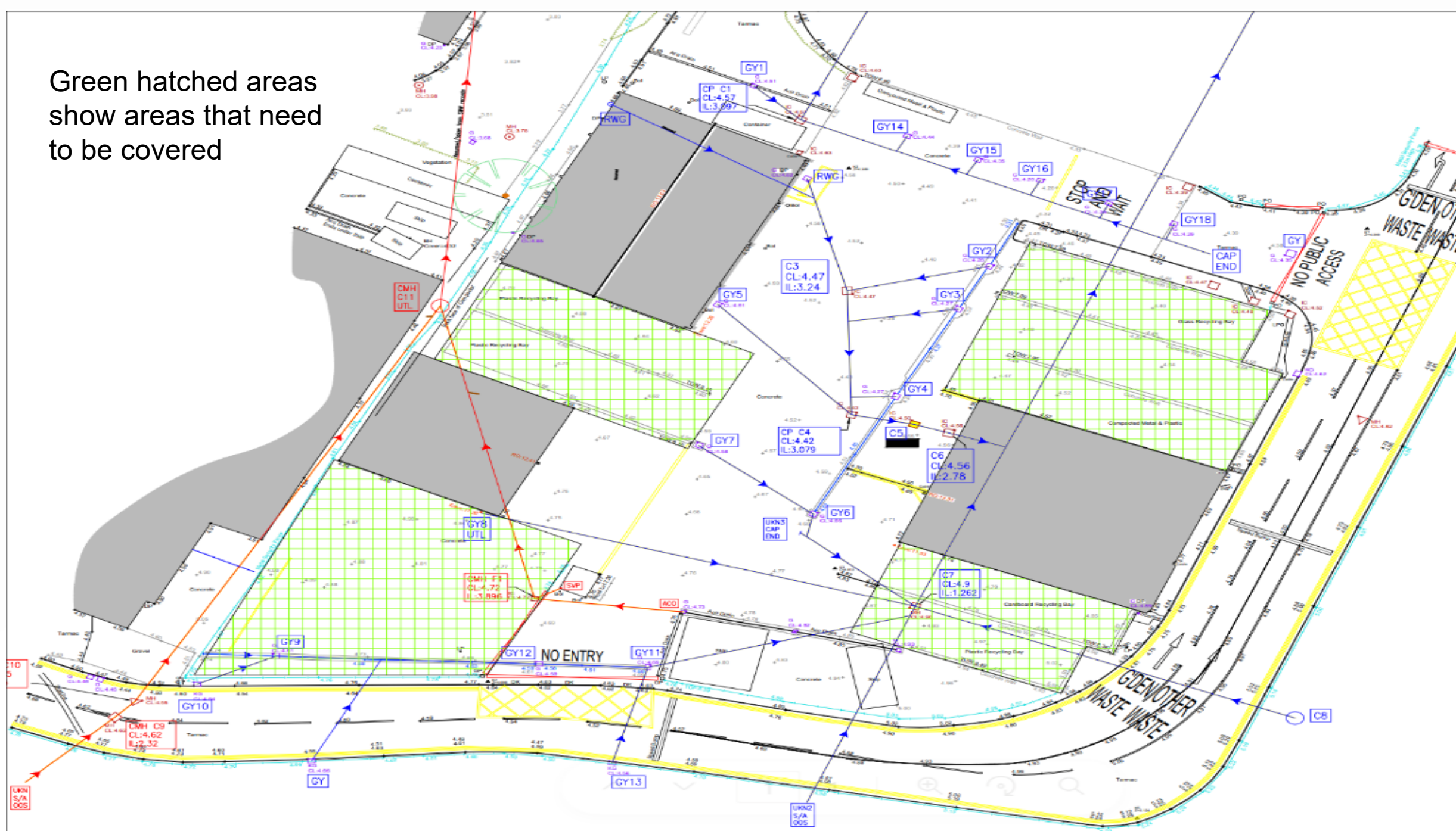
- The Waste Transfer Station currently operates under permit exemptions.
- Site review undertaken to explore options to bring the site to a permissible state.
- The change in legislation means a permit must be obtained to continue operations at the site.
- We have worked collaboratively with the Environment Agency, as the regulatory body, to understand and agree the required improvements to the site.

# Site Infrastructure Requirements

## Key works required

- Portal framed covered sheds, with fire segregation to accommodate waste stockpiles and allow vehicle movements.
- Sealed drainage to ensure any leachates from covered waste do not enter the surface water drains.
- Fire protection measures across the site in line with the Fire Prevention Plan.
- Upgraded material sorting and storage capacity for cartons and plastic films.
- Installation of greywater storage systems for use in fire safety and site operations.
- Solar panel system to generate electricity for use on site.

Green hatched areas  
show areas that need  
to be covered





Orange shows new covered areas.

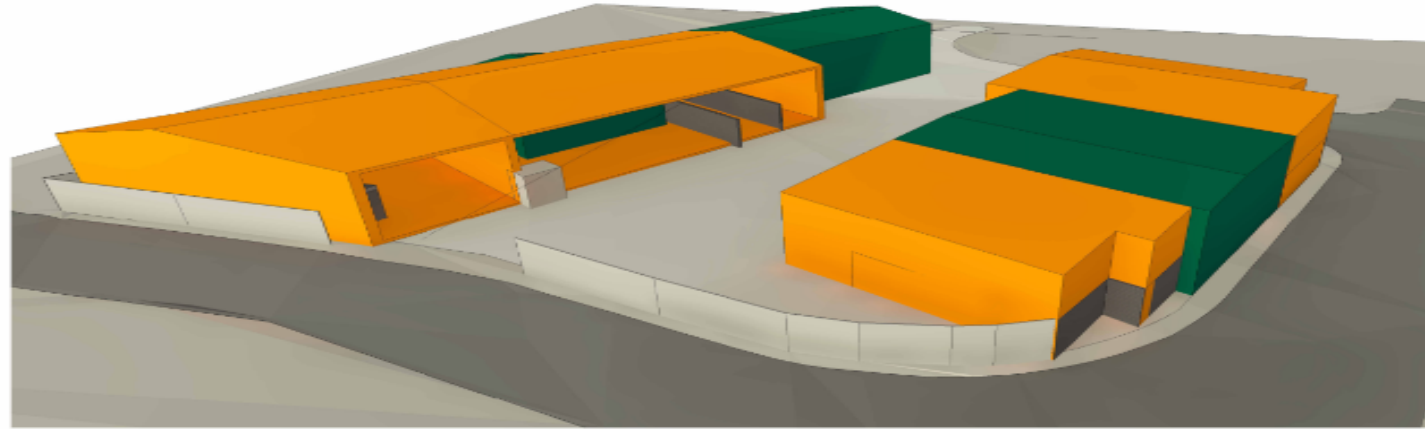
Note requirement to move into the site to enable installation of suitable fire-resistant boundary.



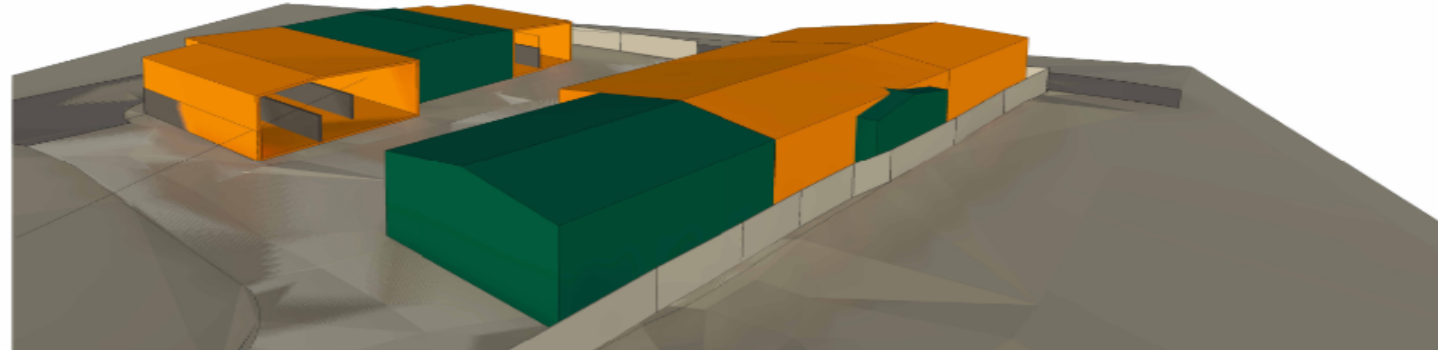
## Outline Design

Orange shows new covered areas.

Green existing.



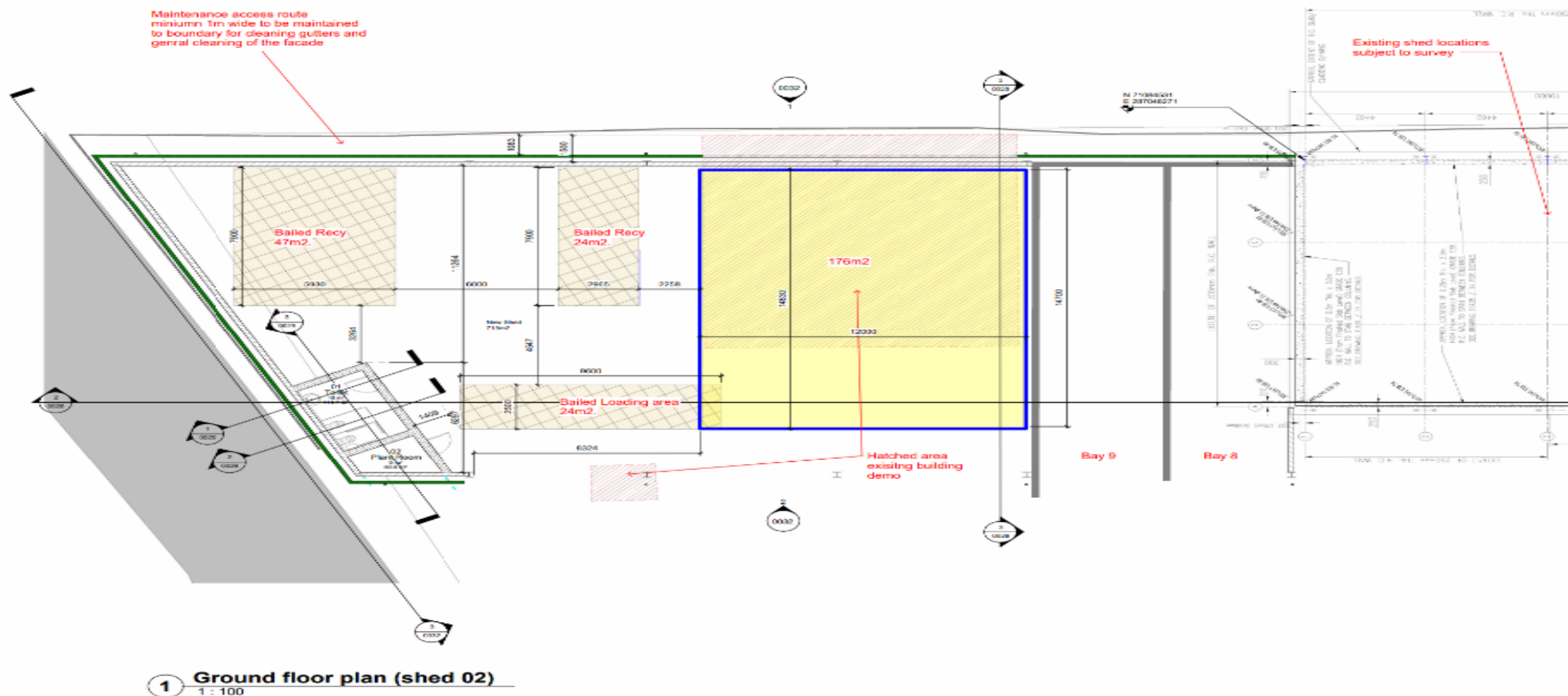
① Perspective 01



② Perspective 02

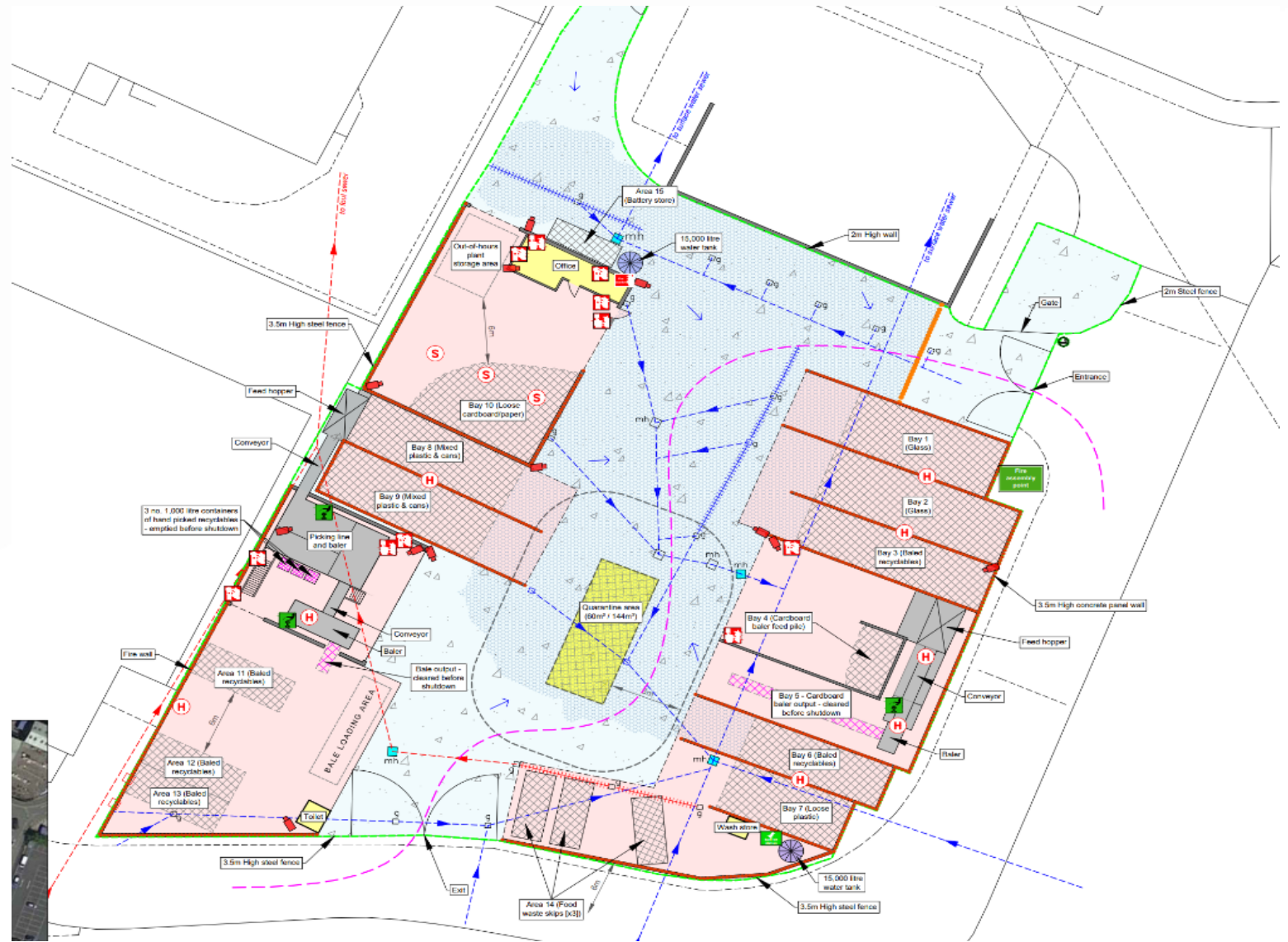
# Outline Design

Blue box denotes area assigned to sorting equipment.



## Outline Design

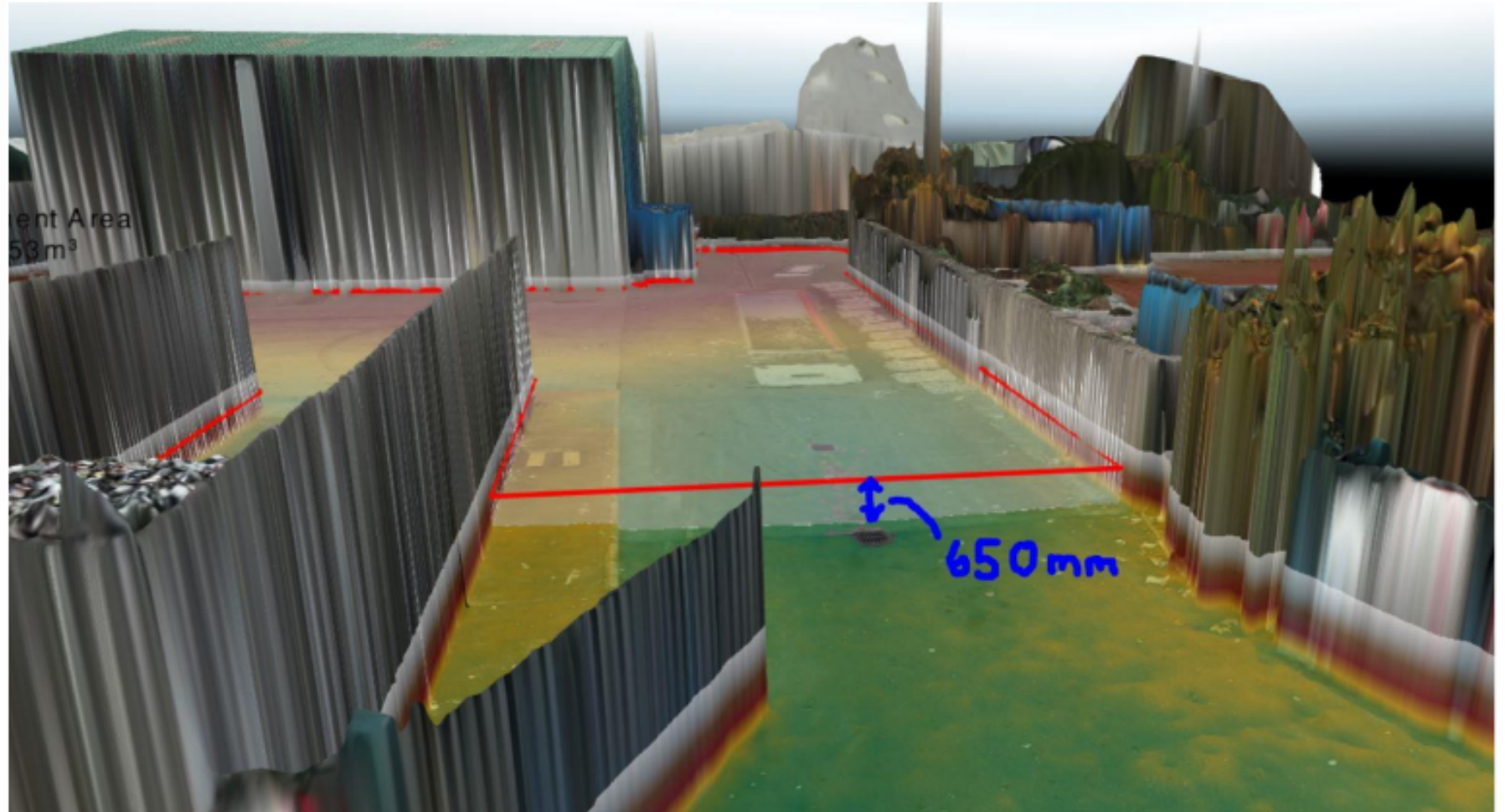
The Fire Prevention Plan requires us to identify quarantine areas, ensure the site perimeter and stockpiles of waste are segregated to required standards





## Outline Design

The Fire Prevention Plan requires us to contain waste water used to tackle fires linked to waste stockpiles sizes.



# Timeframes

- Works need to be delivered by March 2027 for us to comply with Simpler Recycling requirements.
- The addition of cartons by March 2026 can be temporarily handled using the existing site infrastructure.
- The current site could not handle the collection of plastic films due to space and sorting limitations.
- The site needs to remain operational throughout the works, albeit with reduced capacity. This creates challenges to delivery of the works and has been factored into the estimated delivery timeframes



# Procurement

- Works need to be delivered by March 2027 for us to comply with Simpler Recycling requirements.
- Two interdependent procurements required. Building works. Sorting equipment.
- The estimated costs are considered commercially sensitive and will be included as a separate Part II item for consideration at the Full Council meeting on the 20 May 2025.
- The budget for the required works will be funded from revenue contributions to capital, using income from the Extended Producer Responsibility scheme due from April 2025 and DEFRA revenue support for food waste collections anticipated from April 2026 and CIL.



# Questions?



[www.teignbridge.gov.uk](http://www.teignbridge.gov.uk)

